

PLOT PLAN PROVIDED BY :  
RUSSELL N. SHORTT BC LAND SURVEYOR  
USED WITH PERMISSION.

© POINT ONE ENGINEERING

THIS DRAWING IS NOT TO BE  
USED FOR CONSTRUCTION PURPOSE  
UNLESS SO NOTED.

CLIENT  
BYRON BOLTON  
WESTWINN GROUP

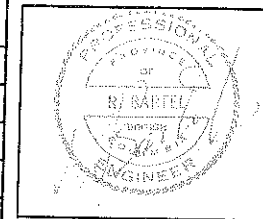
PROJECT  
2008 - 62  
STORM WATER MANEGEMT

DRAWING TITLE  
PLOT PLAN  
WITH GRADE ELEVATION

REV. #	DATE	DESCRIPTION	BY
1	2009/01/26	ISSUED FOR REFERENCE	RB
DRAWN BY:		R. BARTEL	
DATE:		JANUARY 26, 2009	

**POINT ONE**  
ENGINEERING

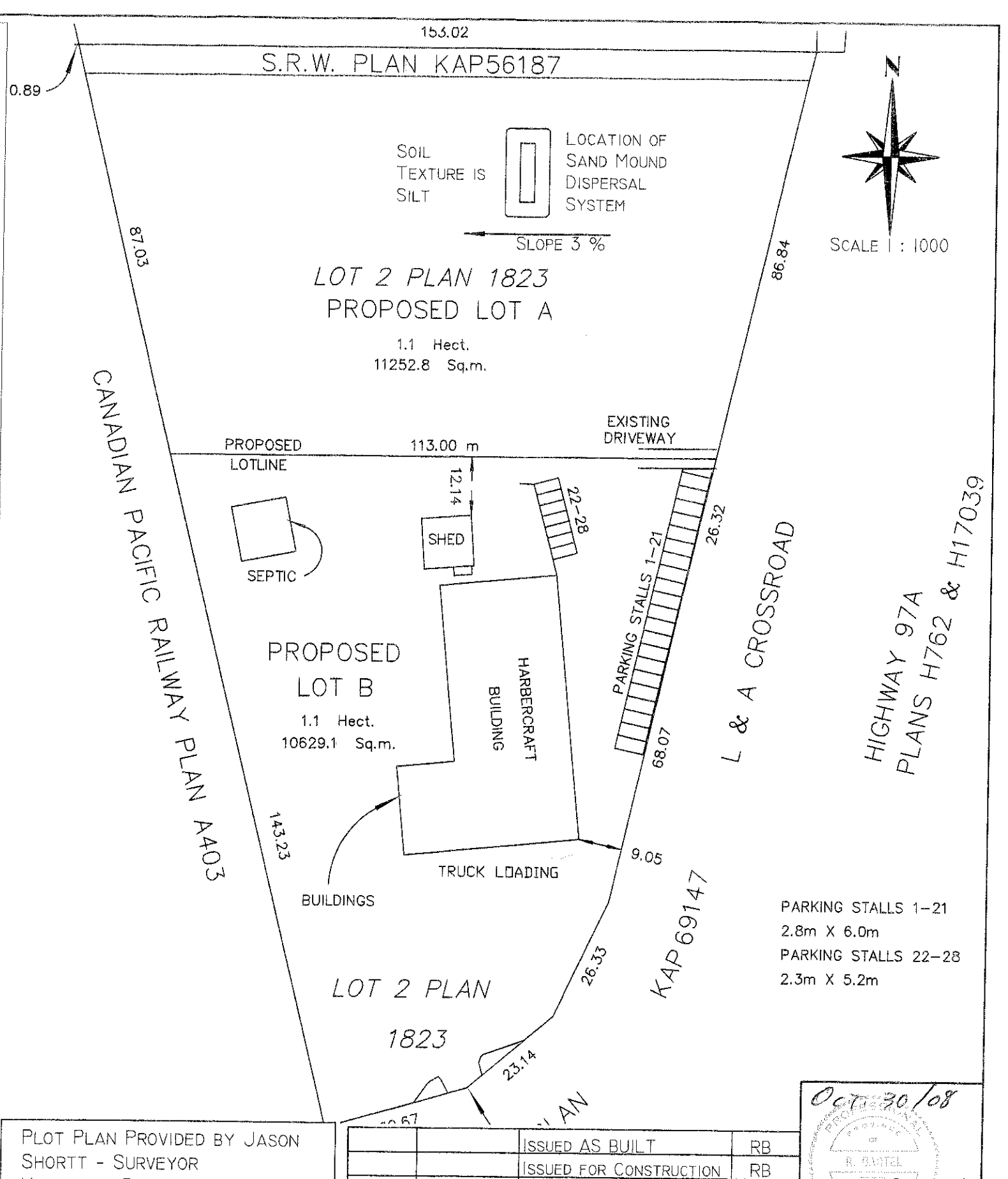
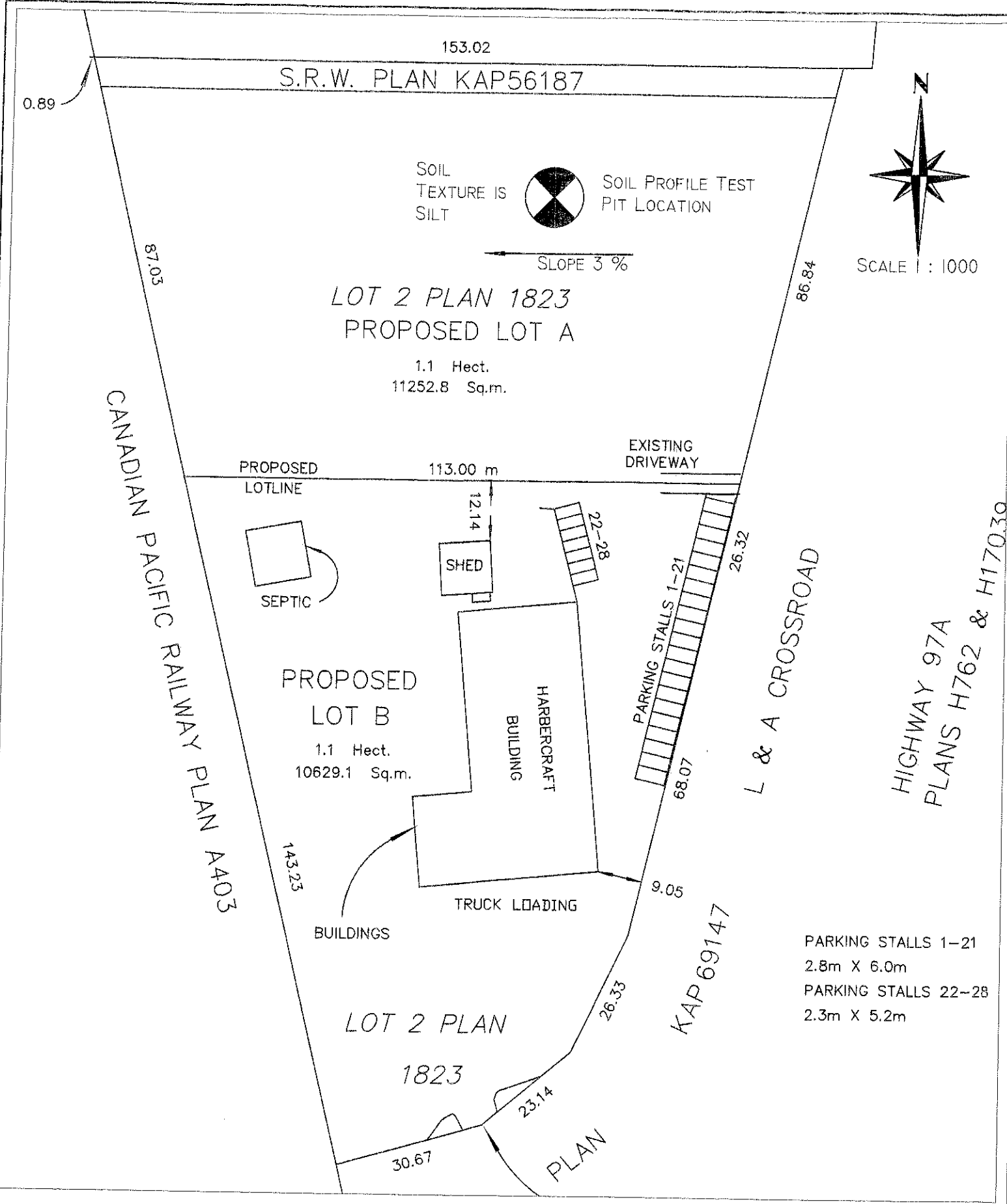
JANUARY 26, 2009



R. BARTEL, P. ENG.

DRAWING NO.  
2008 - 62 - 01 S

D:\AutoCAD Drawings\2008-62 Byron Bolton\2008-62 Plot Plan.dwg, 31/10/2008 6:49:37 AM



PARKING STALLS 1-21  
2.8m X 6.0m  
PARKING STALLS 22-28  
2.3m X 5.2m

PARKING STALLS 1-21  
2.8m X 6.0m  
PARKING STALLS 22-28  
2.3m X 5.2m

PLOT PLAN PROVIDED BY JASON  
SHORTT - SURVEYOR  
USED WITH PERMISSION

ISSUED AS BUILT	RB		
ISSUED FOR CONSTRUCTION	RB		
ISSUED FOR SUBDIVISION	RB		
REV. #	DATE	DESCRIPTION	BY
1	2008/10/29	ISSUED FOR SUBDIVISION	RB
DRAWN BY:		<b>POINT ONE</b>	
DATE:		ENGINEERING	
OCTOBER 28, 2008		250-549-3506	

Oct 30/08  
  
 R. BARTEL, P. ENG.  
 DRAWING NO.  
 2008 - 62 - 01

© POINT ONE ENGINEERING

THIS DRAWING IS NOT TO BE  
USED FOR CONSTRUCTION PURPOSE  
UNLESS SO NOTED.

CLIENT  
BYRON BOLTON

PROJECT 2008 - 62  
ONSITE WASTEWATER SYSTEM

DRAWING TITLE PROPOSED  
SUBDIVISION LAYOUT