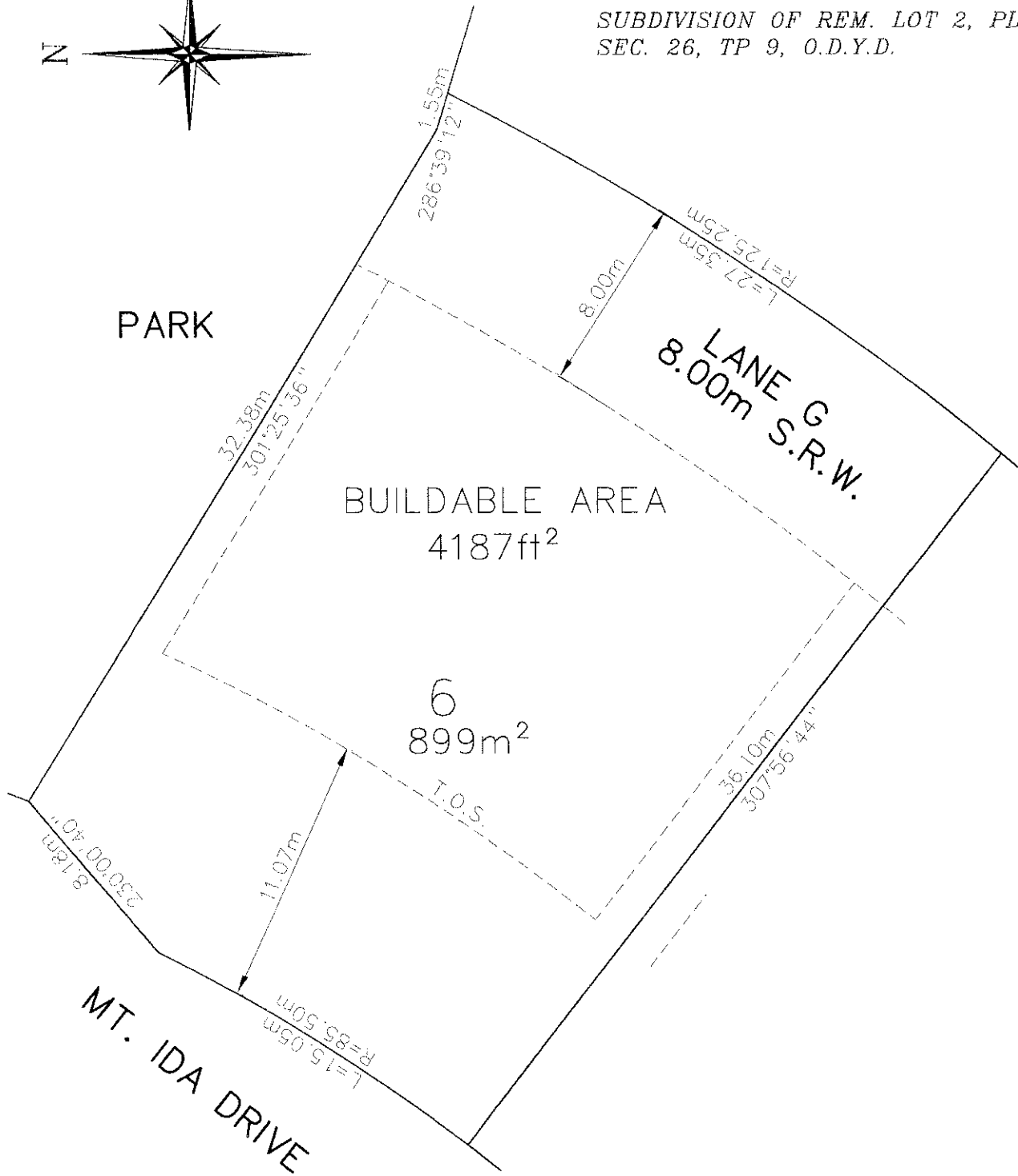



LEGAL DESCRIPTION:

SUBDIVISION OF REM. LOT 2, PLAN 26580,
SEC. 26, TP 9, O.D.Y.D.



NOTES

LOT PLAN FOR INFORMATION PURPOSES ONLY. OWNER AND/OR CONTRACTOR TO VERIFY ALL INFORMATION SHOWN.

			DRAWN A.W.		 D.E. PILLING & ASSOC. LTD. CONSULTING ENGINEERING <small>200, 540 GROVES AVE., KELLOWNA, B.C. V1Y 1V7</small> <small>TEL: 1-250-763-2315</small> <small>FAX: 1-250-763-6590</small> <small>EMAIL: engineering@pilling.ca</small>	DRAWING NO.
			DESIGN			1979-LT6
			APPROVED			
			DATE JAN., 2008		ALDEBARAN ENTERPRISES INC. MIDDLETON MOUNTAIN SITE PLAN PHASE 2A - LOT 6	REV. NO.
1			05/29/08	AW		REVISED LOT NUMBER
No.	DATE	BY	REVISION	CHK'g	SCALE	
					1:250	